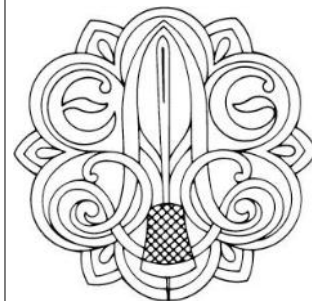


"The mission of EGA is to stimulate appreciation for and celebrate the heritage of embroidery by advancing the highest standards of excellence in its practice through education, exhibition, preservation, collection and research."



Draggin' Threads

South Bend / Michiana Chapter
The Embroiderers' Guild of America, Inc.



Letter from the President

Your stitching projects may be lacking a bit of attention with the long days of summer – I am distracted with wanting to be outside working on those many projects that have been neglected during the winter.

Our group of fourteen stitchers certainly enjoyed Kim Sanders and her delightful silk embroidery class. Stitching on Duponi silk is fun and forgiving, and the project is beautiful.

The next Board meeting is fast approaching on September 12 at 8:30 am; since the first Tuesday falls on Labor Day, we will meet one hour before the morning meeting. Please join us if you can because we have so many things to discuss: the "road trip" visiting needlework shops and future educational programs in particular.

The general discussion has been to take our bus trip in the spring to Chicago suburb area shops, but it will take some planning, and we need a leader to coordinate the bus and the itinerary. Are you interested???

Take a quick moment to visit our [Great Lakes Region website](#) to sign up for the April GLR Seminar in Green Bay, WI, an easy drive from our area. Most important is the Indiana State Day in Indianapolis with Marsha Gomola's Cardinal stumpwork because registration ends before our program year starts. The deadline is September 1.

Hopefully you have saved the date for the [picnic](#) at Sheryl's home on Saturday, July 23. Hope to see you there,

Patti

**Volume 35, Issue 5
July 2011**

Calendar of Events

PICNIC @ Sheryl's	7/23
----------------------	------

Board Meeting @ Patti's	9/12 8:30am
----------------------------	----------------

Morning Meeting	9/12 9:30am
--------------------	----------------

Evening Meeting	9/27 6:30pm
--------------------	----------------

Board Meeting @ Patti's	10/3 9:30am
----------------------------	----------------

Morning Meeting *	10/10 9:30am
----------------------	-----------------

* Different day than
board meeting

Evening Meeting	10/25 6:30pm
--------------------	-----------------

On the Inside

Page 2

- [Christmas in July- Picnic](#)
- [September Program](#)
- [Save the Date](#)

Page 3

- [Stitches of the Month](#)
- [Advertisers](#)

Page 4

- [Newsletter News](#)
- [Chapter Policies](#)

Page 5

- [Birthdays](#)



Christmas in July - Picnic



Don't forget the summer picnic is coming up. We will enjoy treats, talking and temari...rain or shine, although we're hoping for the shine. Please bring a dish to pass and the recipe to share unless it's a family secret (and that includes the Martin's and Meijer's families). Beverages and plates etc will be provided...please bring whatever serving pieces you might need for your dish. Also keep in mind that refrigerator/freezer space is limited.

If you have signed up for the Temari Santa project, hopefully you are making progress in getting the yarn and thread wrapping done. If you have any questions, or problems, let me (Sheryl Wilson) know and we'll try to get it taken care of before the day of the picnic.

Looking forward to celebrating Christmas with everyone!



September Program

The September meeting is designated for doing an outreach project. This year we are going to again be making Cancer Caps and donating them for local cancer patients. This is a meeting that lets us talk and visit and catch up on everyone's summer activities while we use our hands to make something to benefit the people of our community. Please bring some fabric scissors if you have them. We also need a couple of sewing machines for each of the chapter meetings. If you can bring a machine, please call or email Sheryl so she can plan for them. We're looking forward to getting back to monthly meetings and catching up with everyone...please join us. Let's see if we can top last year's output.

Board Mtg
9/12 at 8:30

Morning Mtg
9/12 at 9:30

Evening Mtg
9/27 at 6:30

Supplies needed:

If you have them and can bring them:

- Fabric scissors
- Sewing machine

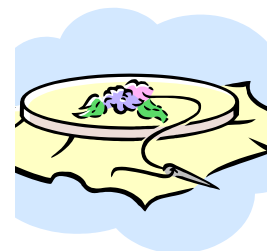


Save the Date: October 5 & 6th, 2011

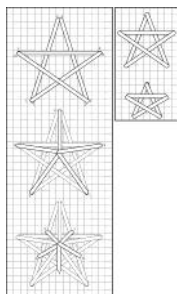
Ridge Needlepointers, Lansing, Illinois has invited **Toni Mineri** to teach a 2-day class on "back to basics". For church meeting location and project/prices, call Gretchen Wolf 219/836-2458 or cell 719/502-1672.

Stitches of the Month - Stars and Stripes

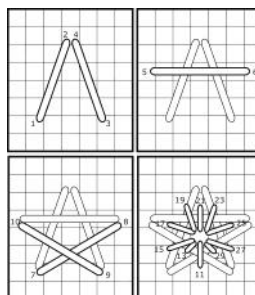
I wanted to find a fireworks stitch for Independence Day, but couldn't. While I was looking for a stitch that looked like fireworks, I found these stitches instead. Happy Independence Day!



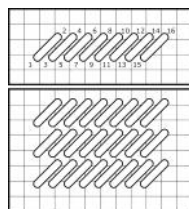
Star - Large



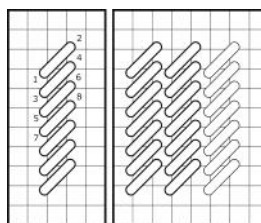
Star - Small



Diagonal Long Stitch Horizontal Stripe



Diagonal Long Stitch Vertical Stripe



Stitches CD Volume 1 © Ruth Schmuff



D & G Electric
Residential, Commercial, & Industrial
574-291-8460
dennis@dgelectricindiana.com

Dennis F. Weaver
5134 Canton Street
South Bend, IN 46614-9804

Licensed, Bonded, and Insured



FRAMED
custom picture framing

17911 State Road 23
South Bend, IN 46635
574-272-3269

Opening hours:
Tues. - Fri.: 9:30 - 5:30
Sat. - 9:30 - 3:00
Sun. & Mon. - closed

Barbara Molnar

Please remember to patronize
our advertisers and thank
them for their support.

Newsletter News

This is the last newsletter I will be doing for the South Bend/Michiana EGA. My daughter, Kate, and I have decided to drop out of the EGA at this time due to very busy schedules that made it difficult to attend meetings and participate at the level we wanted. It has been a pleasure to be part of this group.

Beate Lies has graciously agreed to take over newsletter duties again. She will let you know the new schedule and deadlines.

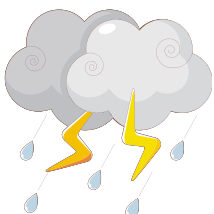
Happy stitching!

Ginny & Kate Weaver



Chapter Policies

**South Bend /
Michiana
Chapter
The
Embroiderers'
Guild of America,
Inc.**



Morning Meetings:

2nd Monday – 9:30 a.m.
Prince of Peace Church
53105 Ironwood Rd.
South Bend

Evening Meetings:

4th Tuesday – 6:30 p.m.
Mishawaka-Penn Library
209 Lincolnway East
Mishawaka

Board Meeting:

1st Monday, 9:30 a.m., at the president's house. Members are welcome to attend.

Stitch-in Groups:

Daytime: last Monday – 9:30 a.m.
(None for this summer)
At various member's homes.

Guest Policies:

Guests are welcome to attend two meetings; they are then expected to become dues-paying members.

Dues:

\$ 50.00 / year. This includes national, regional and local dues and a subscription to *Needle Arts*.

Incident Weather:

If the South Bend schools are closed, we will not have meetings.

Newsletter:

Publishing dates to be determined.

Send material to be included to:

Beate Lies
55083 Patrician Park Drive
Osceola, IN 46561 -OR-

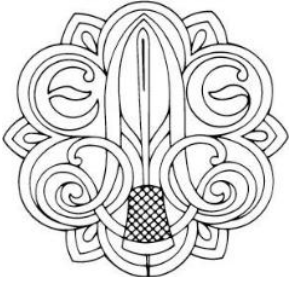
blies@att.net

Copy Privileges:

Any chapter may freely copy anything from this newsletter as long as proper credit is given. Anything copyrighted – and not to be copied – will be marked as such.

Board Members:

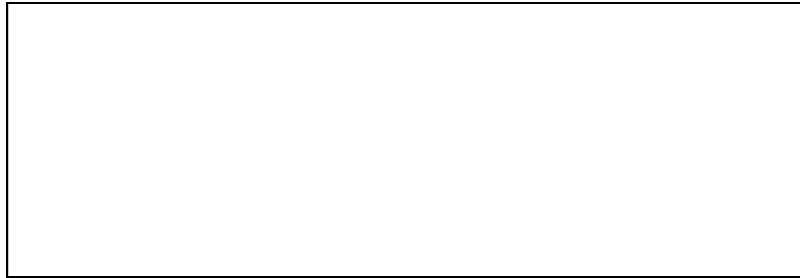
President::	Patti Crowley
1st V.P. Programs:	Sheryl Wilson
2nd V.P. Evening Group:	Pat Swikoski
Treasurer:	Katy Burke
Membership:	Beate Lies
Secretary:	Kathy McIlhargie
Regional Rep.:	Kelly Healey
Bylaws:	Louise Fessenden
Christmas Luncheon:	Carol Collins
Community Outreach:	Barb Zimlich
Education:	Carol Collins
Cheer:	Joan Fitt
Merchandise:	Beate Lies
Newsletter:	Beate Lies
Stitch-ins:	Louise Fessenden
Audit:	Sheryl Wilson
Nominating:	Margaret Whitmer



Ginny Weaver
5134 Canton Street
South Bend, IN 46614

DRAGGIN' THREADS
SOUTH BEND / MICHIANA CHAPTER
THE EMBROIDERERS' GUILD OF
AMERICA, INC.

FIRST CLASS MAIL



"The mission of EGA is to stimulate appreciation for and celebrate the heritage of embroidery by advancing the highest standards of excellence in its practice through education, exhibition, preservation, collection and research."

Happy
Birthday!

Kelly Healey	21-Aug
Melinda Palmer	24-Aug
Margaret Whitmer	27-Aug
Beth Kreuter	17-Sep

